

# Sonographic Signs of Adenomyosis

## Benefits of the Coronal Plane



**Dr. Jean Marc Levailant**  
Hôpital Kremlin Bicêtre  
France

**Dr. Bernard Benoit**  
Hôpital Princesse Grace  
Monaco

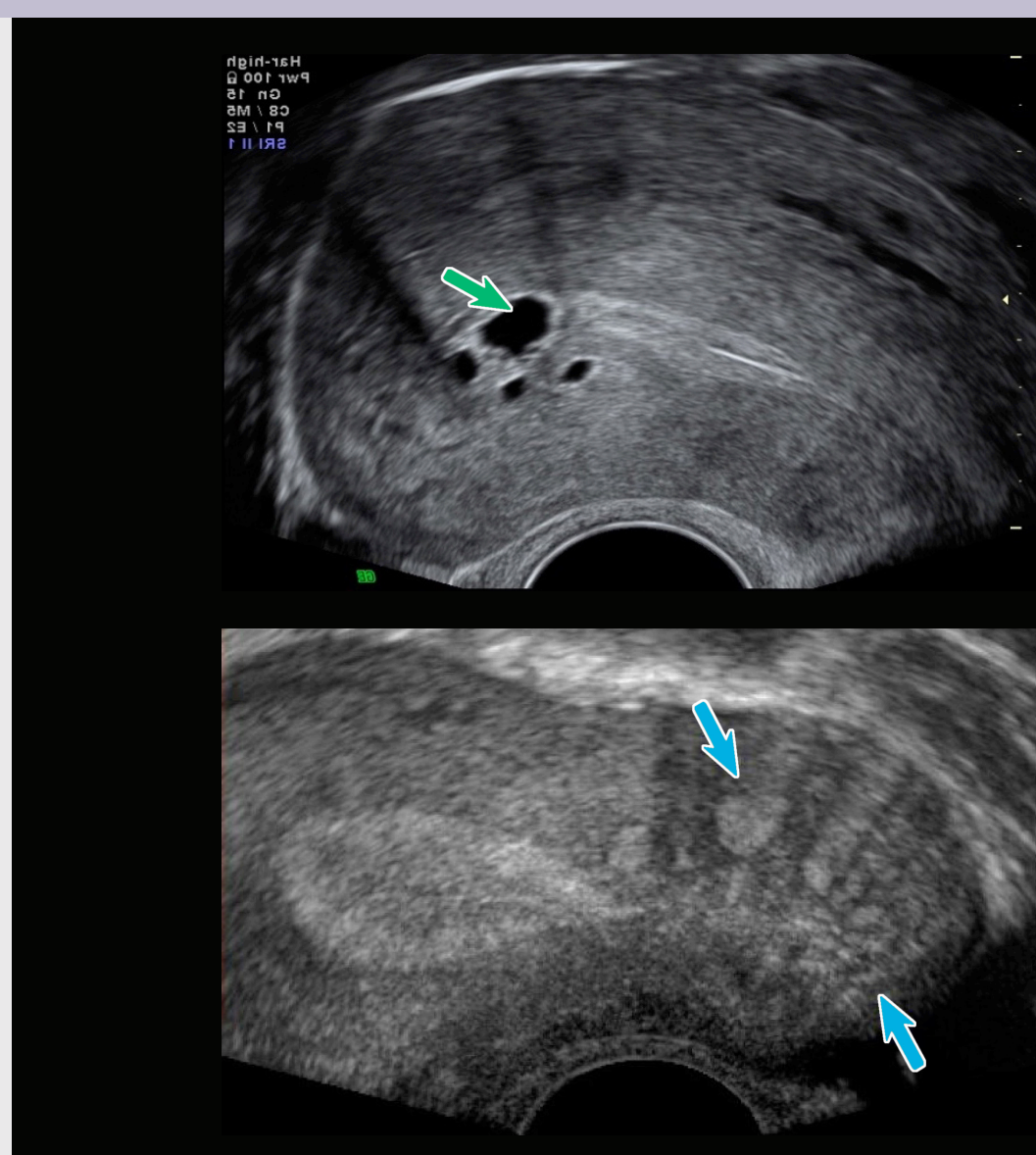
**Dr. Perrine Capmas**  
Hôpital Kremlin Bicêtre  
France

**Pr. Hervé Fernandez**  
Hôpital Kremlin Bicêtre  
France

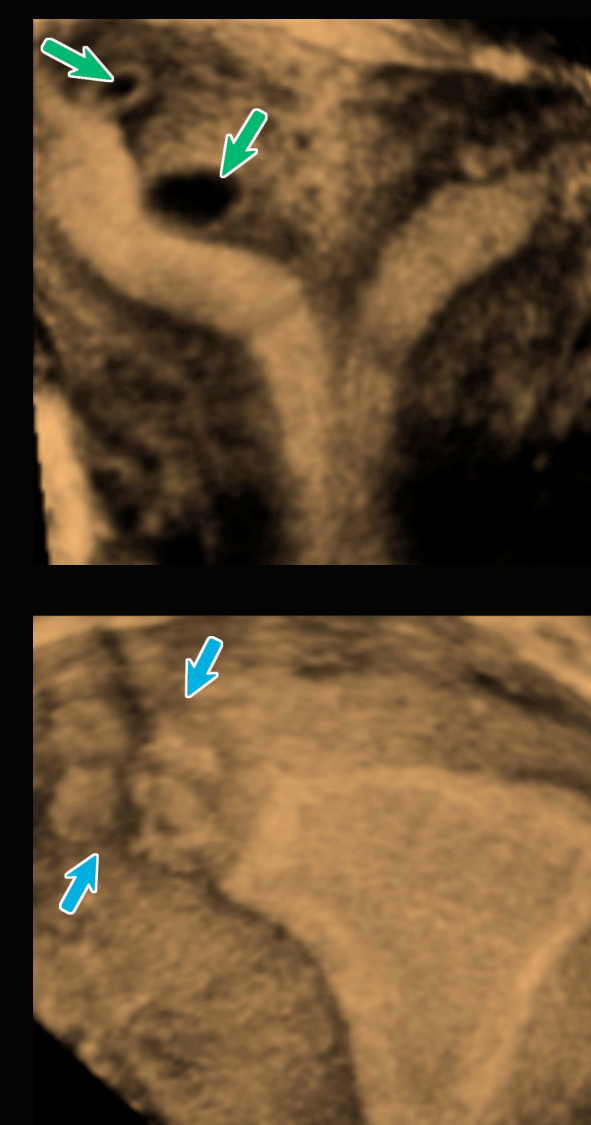
### ADENOMYOSIS WITH CYSTS

### SAGITTAL PLANE

### CORONAL PLANE



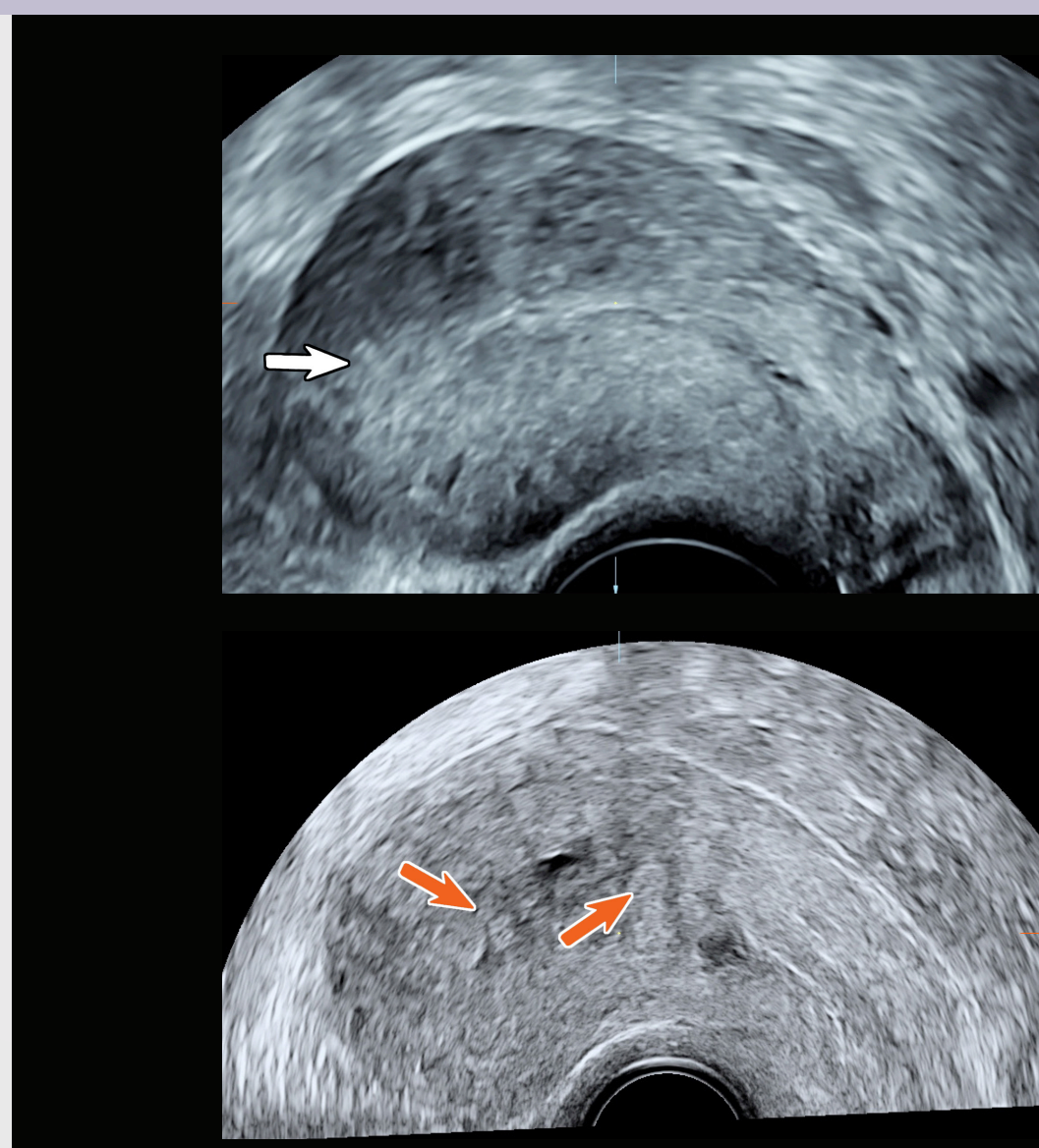
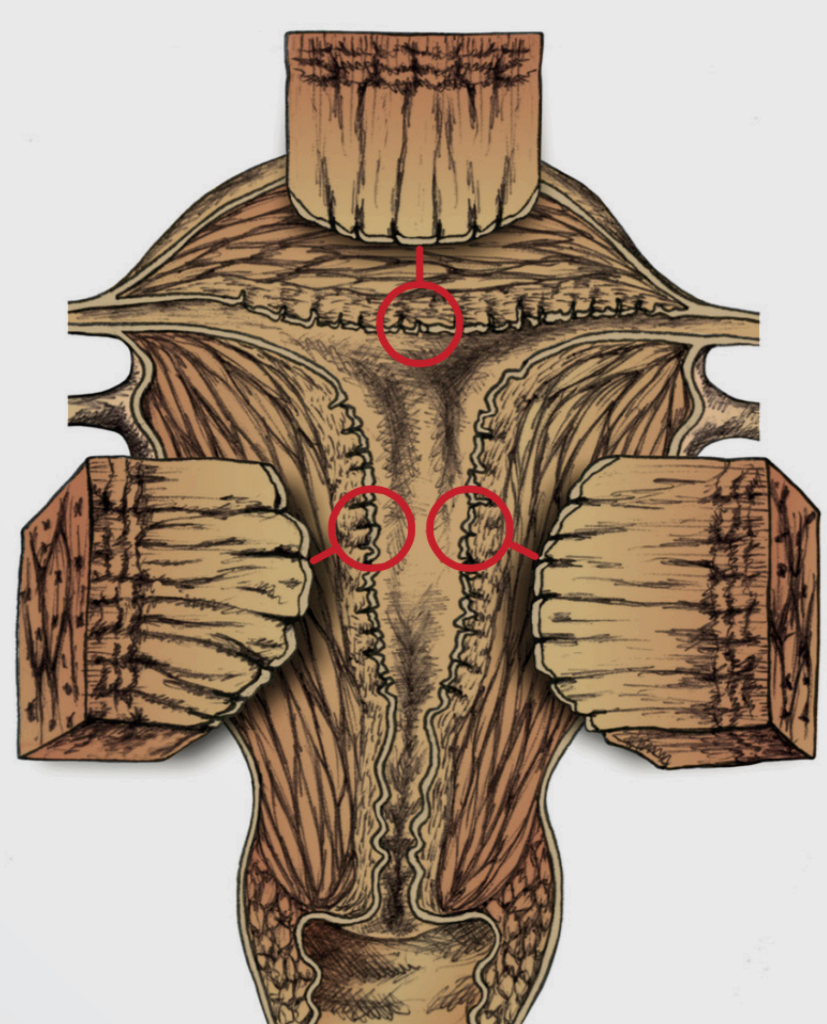
→ Myometrial cysts  
→ Ectopic presence of endometrial glands and stroma within the myometrium



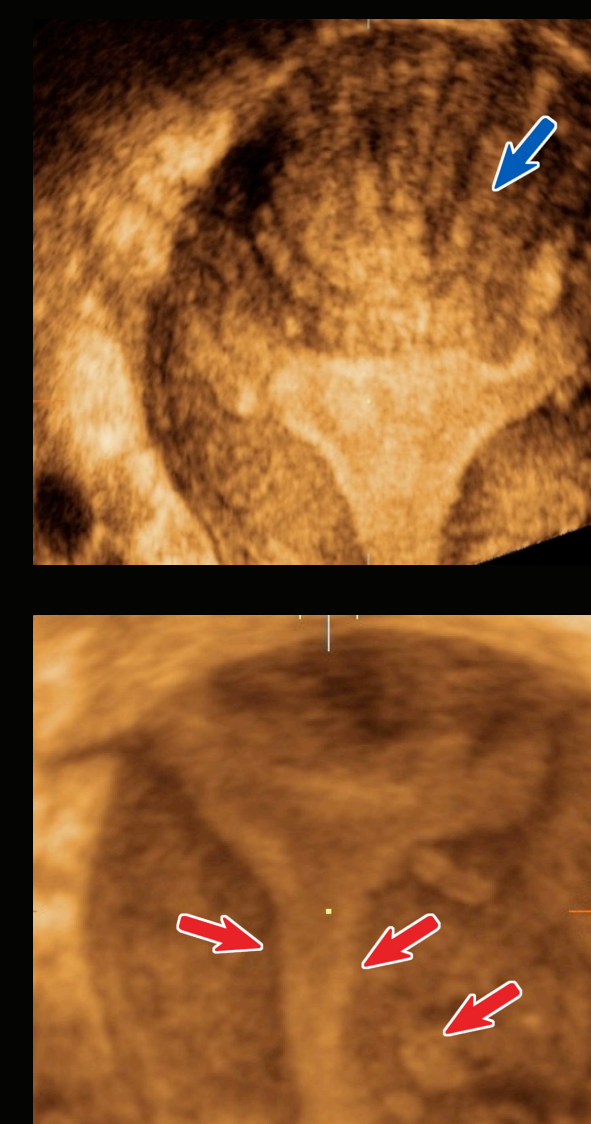
### STRIATIONS

### SAGITTAL PLANE

### CORONAL PLANE



→ Loss of the regular presentation of cavitory fundus  
→ Hypertrophy – striations  
→ Loss of the hyperechoic line inside the cavity and inhomogeneous presentation of the myometrium  
→ Stenosing effect on uterine cavity and presence of endometrial glands and stroma within the myometrium



### TWO MAJOR PLANES WITH A SAGITTAL PLANE AND CORONAL PLANE

#### Five major signs:

- Biometry: Anteroposterior diameter > 40 mm with asymmetry (anterior diameter < posterior diameter)
- Abnormal myometrial echogenicity “fan-shaped shadowing”
- Presence of endometrial glands and stroma within the myometrium
- Loss of hyperechoic border between myometrium and uterine cavity
- Presence of junctional cysts

© 2018 General Electric Company – All rights reserved.

GE Healthcare reserves the right to make changes in specifications and features shown herein, or discontinue the product described at any time without notice or obligation. Contact your GE Healthcare representative for the most current information. GE and the GE Monogram trademarks of General Electric Company. GE Healthcare, a division of General Electric Company. GE Medical Systems, Inc., doing business as GE Healthcare.

November 2018  
JB60702XX