

SIGNATURE
SERIES

VOLUSON GYNECOLOGY

HEALTHIER LIVES. BETTER FUTURES.

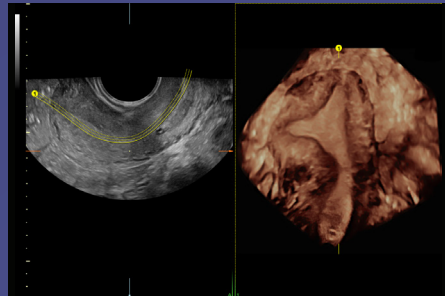
Symptoms such as pelvic pain, post-menopausal bleeding, genitourinary dysfunction and infertility, can be confusing and concerning for your patients. They need answers and rely on your expertise for accurate diagnosis, intervention and management. Ultrasound is often the first line of defense in diagnosing gynecological conditions and the Voluson™ Signature Series systems deliver exceptional imaging and advanced analysis tools. Easy visualization of the coronal plane within the 3D volume, combined with a suite of 3D tools can provide clinical insights to aid in detection and diagnose of gynecological conditions earlier than ever before. Earlier diagnosis with greater confidence allows you to deliver exceptional care and create a healthier future for women.

gehealthcare.com

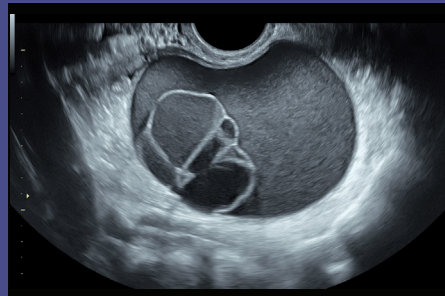


EMPOWERING EXCEPTIONAL CARE

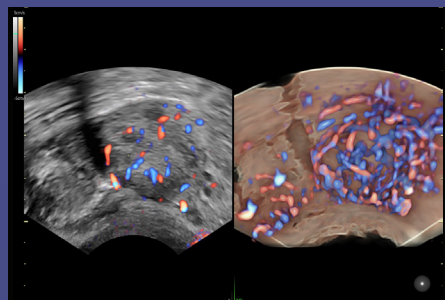
Every pelvic ultrasound brings an opportunity to create a healthier future for your patients



Advanced Volume Contrast Imaging (VCI) enhances subtle soft-tissue differences and when combined with **OmniView** any plane can be visualized, including irregularly contoured anatomy

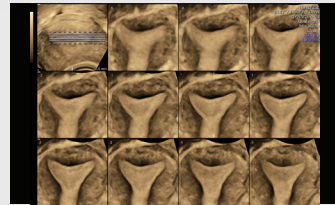


Exceptional detail and contrast resolution enables clear differentiation of the internal architecture in this complex ovarian cyst



Highly sensitive, **HD-Flow™** easily displays small, low flow vessels and decreases color overwrite clearly demonstrating the vascularity of this pelvic mass

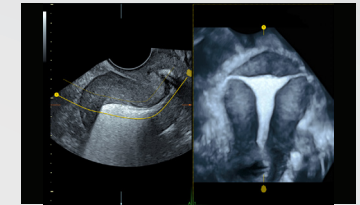
INNOVATIVE TOOLS – ENHANCING YOUR PRACTICE



Simultaneously display multiple slices of a volume data set with **Tomographic Ultrasound Imaging (TUI)** to simplify analysis and documentation of dynamic studies



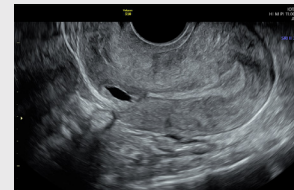
HDlive™ generates amazingly realistic images to appreciate topography and enhance depth perception



3D HyCoSy (Hysterosalpingo Contrast Sonography)/ HyFoSy (Hysterosalpingo Foam Sonography)* displays fallopian tubes for assessment of tubal patency

STREAMLINED WORKFLOW– ENHANCING EFFICIENCY

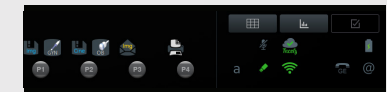
Enhance patient comfort and workflow with **Wide-sector** transducer display for more anatomical information in a single image



BetaView steers the scan plane via crystal movement rather than manipulating the transducer to maximize patient comfort

Balance daily schedules with **Scan Assistant** – the flexible and customizable exam protocol tool

Reduce keystrokes and increase workflow efficiency with faster access to frequently used probes and presets with **Probe Favorites**



Estimate ovarian cancer risk based on **IOTA (International Ovarian Tumor Analysis)** Simple Rules and LR2 models, both approved by the IOTA Group

Simplify identification and reporting of uterine abnormalities with **Uterine Classifications** based on ESHRE, ESGE, and ASRM guidelines**



© 2019 General Electric Company – All rights reserved.

GE Healthcare reserves the right to make changes in specifications and features shown herein, or discontinue the product described at any time without notice or obligation. Contact your GE Healthcare representative for the most current information. GE, the GE Monogram, Voluson, HDlive, SonoAVC, and SonoNT are trademarks of General Electric Company. GE Healthcare, a division of General Electric Company. GE Medical Systems, Inc., doing business as GE Healthcare.

June 2019
JB67501XX

*Contrast is not available in all countries & languages

**ESHRE – European Society of Human Reproduction and Embryology
ESGE – European Society of Gastrointestinal Endoscopy
ASRM – American Society of Reproductive Medicine